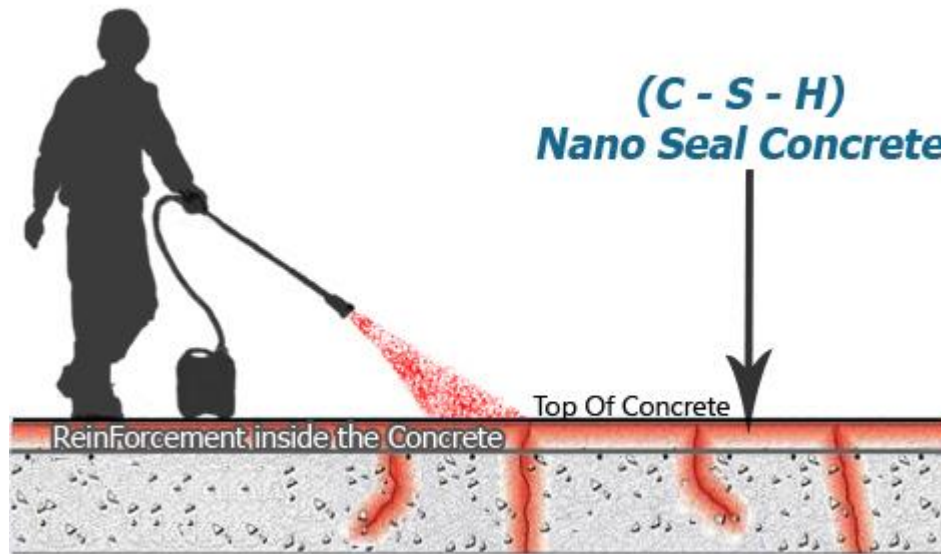


(C-S-H) Gel Nano Technology

Calcium Silicate Hydrate Inside the Concrete

Waterproofing Protection Durability and Self healing the Concrete

Dr. ALI - MOAZAMI PATENT CERTIFICATE : 92/A 004302 Date: 02/01/2019



Product Description

(C-S-H) a revolutionary & reliable way to waterproofing, protection, Durability and Self healing waterproof Increase Strength Durability and self healing the Concrete .

(C-S-H) Gel is spray applied and penetrates into the concrete and creates a gel within cracks , pores and capillaries.

It incorporates advanced biochemical technology which allows it to seal cracks up to 2.00 mm and reseal hairline cracks that develop after treatment .

(C-S-H) gel does not form a film on the surface so it cannot be damaged by traffic or environmental exposure.

(C-S-H) gel is a sub – surface barrier that can accommodate thermal stress.

Key Benefits

- 100% Trafficable - no protection required.
- Tolerates thermal stresses – gel composition not rigid
- Treatment will last the life of the concrete

- Lowers risk – faults are easy to find and fix
 - Fast and efficient to apply
 - The world's most environmentally friendly concrete waterproofing
-

Suitable Applications

Concrete runway

Taxiway

RCC Road

Bridge Decks

Rooftops

Car – Park

Marine Structures

Airport Runways

Podium Decks

Retaining Structures

How does (C-S-H) gel work?

(C-S-H) gel inside the concrete

After application (C-S-H) gel a calcium-Silica-Hydrate (C-S-H) gel complex.

This remains reactive to moisture in the pores and cracks of the penetrated zone

The calcium in the gel reacts with the atmosphere to create a low- calcium gel depositing calcium carbonate, filling cracks and pores .The low calcium gel is

“hungry” for more calcium ,which is provided by moisture and cement hydration.

The cycle repeats over time and finds balance until water ingress is stopped.

The biochemical compounds in (C-S-H) gel are essential for this unique catalytic reaction.

Warranty

(C-S-H) gel 20 year Warranty